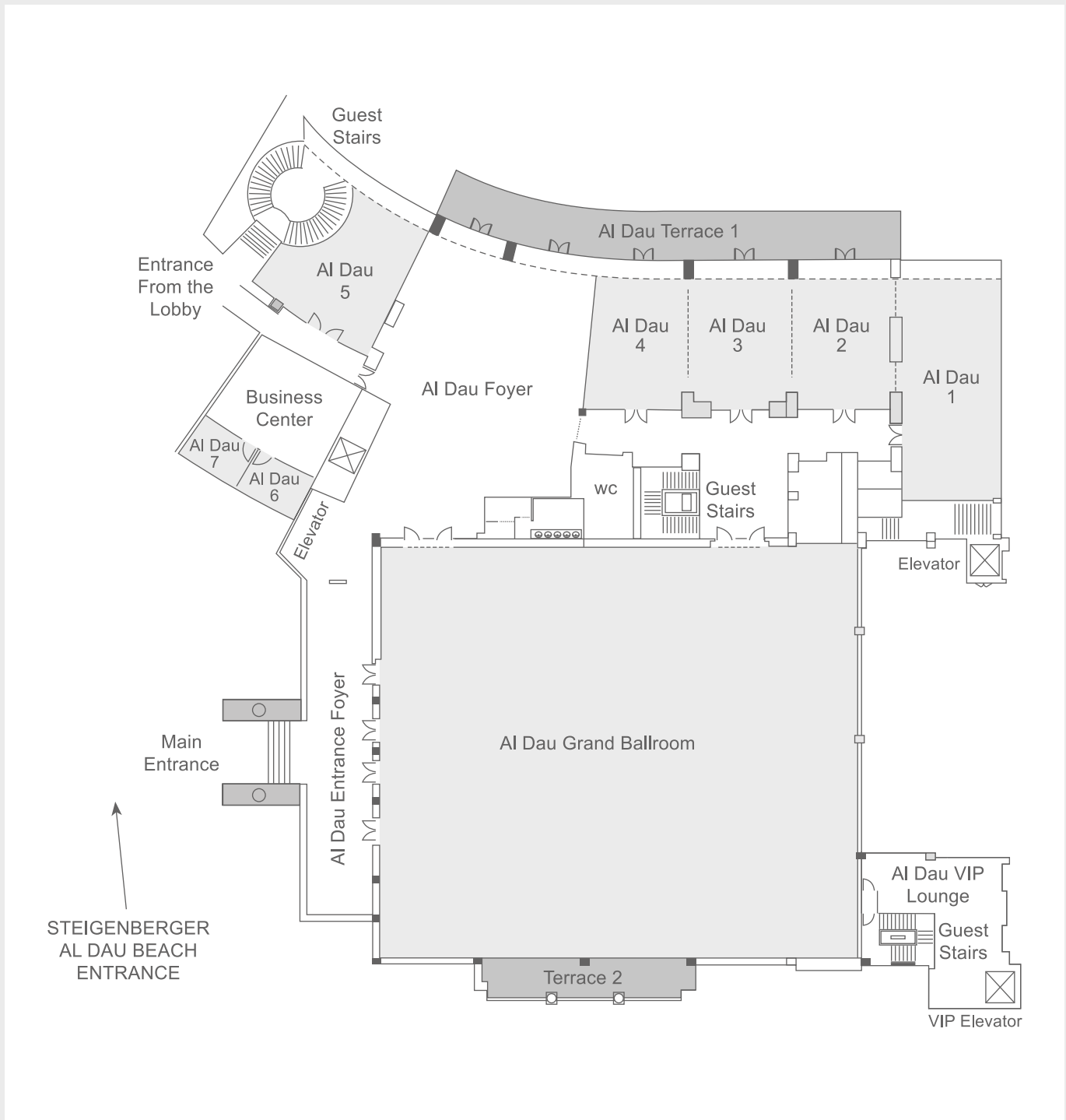


Al Dau International Conference Center

Steigenberger Al Dau Beach Hotel
Yussif Afifi Road · Hurghada · Egypt
T +20 65 3465 400
F +20 65 3465 410
sales@adicc.events
www.adicc.events



Lobby Level

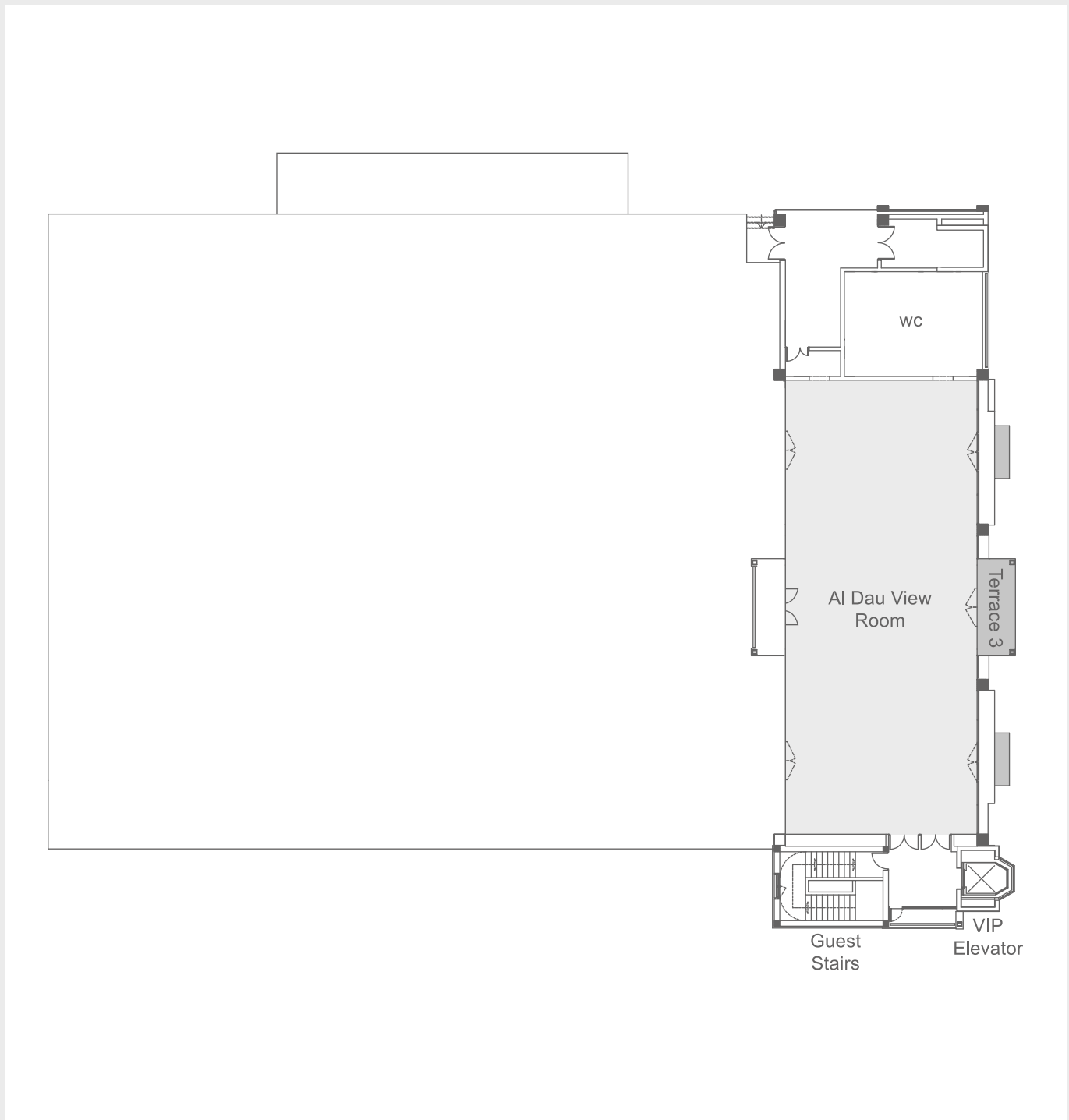


Al Dau International Conference Center

Steigenberger Al Dau Beach Hotel
Yussif Afifi Road · Hurghada · Egypt
T +20 65 3465 400
F +20 65 3465 410
sales@adicc.events
www.adicc.events



Upper Level

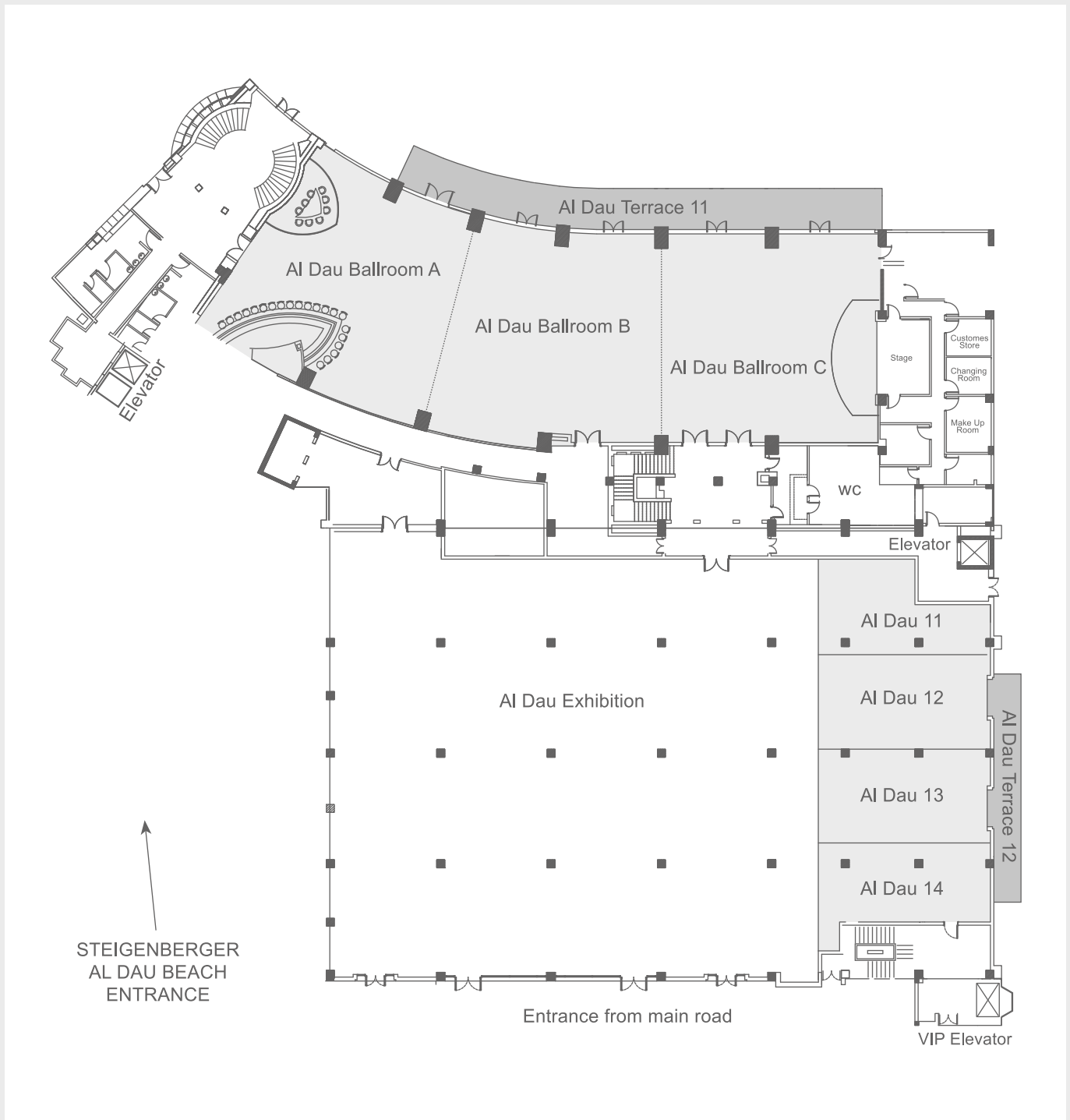


Al Dau International Conference Center

Steigenberger Al Dau Beach Hotel
Yussif Afifi Road · Hurghada · Egypt
T +20 65 3465 400
F +20 65 3465 410
sales@adicc.events
www.adicc.events



Ground Level

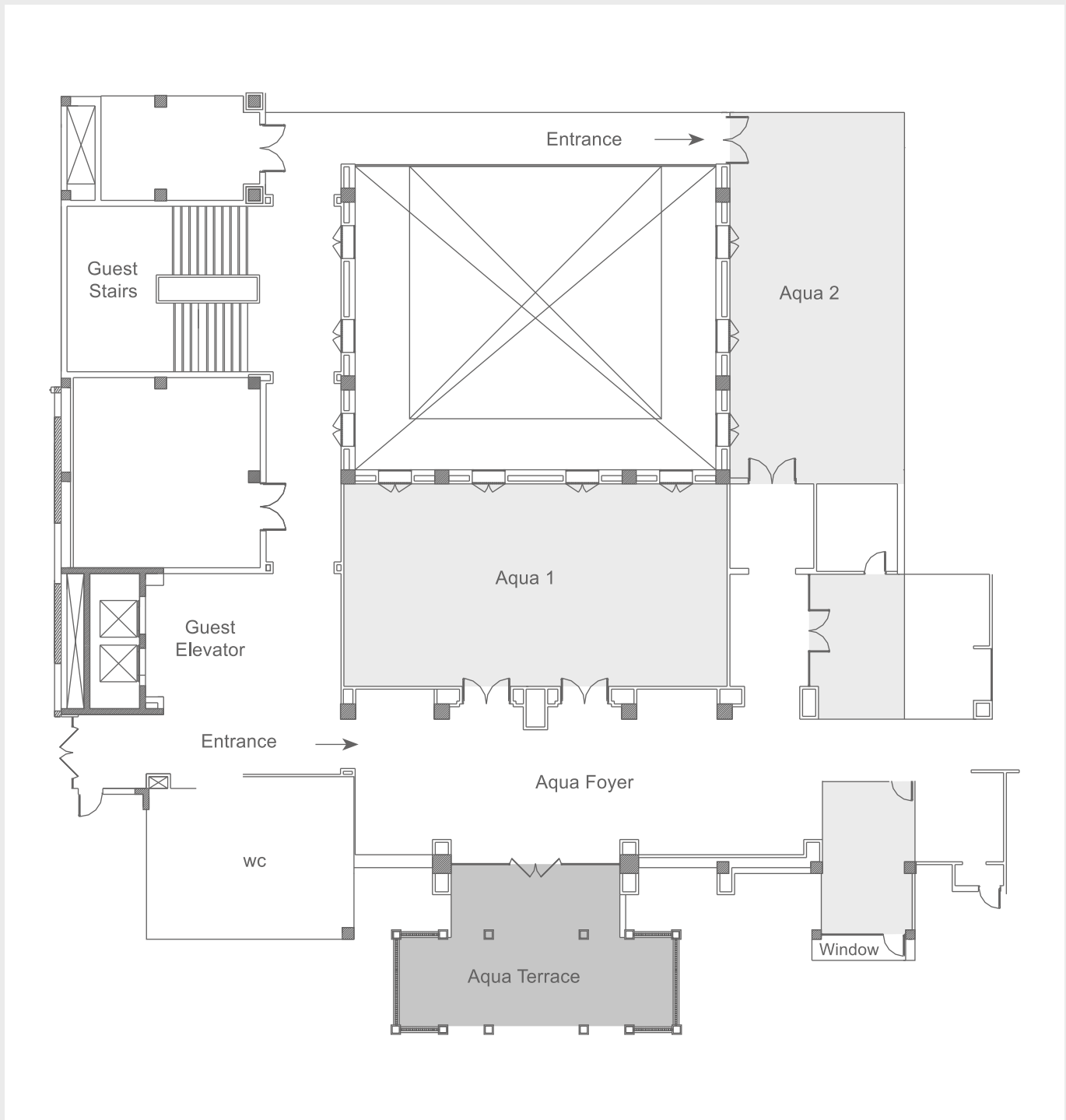


Al Dau International Conference Center

Steigenberger Al Dau Beach Hotel
Yussif Afifi Road · Hurghada · Egypt
T +20 65 3465 400
F +20 65 3465 410
sales@adicc.events
www.adicc.events



Fifth Floor



Al Dau International Conference Center

Steigenberger Al Dau Beach Hotel
 Yussif Afifi Road · Hurghada · Egypt
 T +20 65 3465 400
 F +20 65 3465 410
 sales@adicc.events
 www.adicc.events



FUNCTION ROOMS

Room name	Floor	Size	Height	Length	Width	Classroom	Theater	Banquet	Cocktail	U-shape	Boardroom
Al Dau Ballroom	Ground	560m ²	2.8m	40m	14m	350	600	350	600	120	-
Al Dau Ballroom A	Ground	112m ²	2.8m	8m	14m	60	100	60	70	40	50
Al Dau Ballroom B	Ground	112m ²	2.8m	8m	14m	60	100	60	70	40	50
Al Dau Ballroom C	Ground	336m ²	2.8m	24m	14m	160	350	150	150	50	50
Al Dau Terrace 11	Ground	115m ²	-	38m	3m	-	-	-	-	-	-
Al Dau Terrace 12	Ground	-	-	-	-	-	-	-	-	-	-
Al Dau Exhibition	Ground	1170m ²	4m	39m	30m	-	-	-	-	-	-
Al Dau 11	Ground	50m ²	4m	10m	5m	30	40	30	30	15	15
Al Dau 12	Ground	80m ²	4m	10m	8m	40	60	40	50	25	30
Al Dau 13	Ground	80m ²	4m	10m	8m	40	60	40	50	25	30
Al Dau 14	Ground	50m ²	4m	10m	5m	30	40	30	30	15	15
Al Dau Grand Ballroom	Lobby	1254m ²	6.5m	38m	33m	650	1400	800	1200	350	-
Al Dau 1	Lobby	138m ²	2.8m	18.5m	7.5m	60	100	60	70	40	50
Al Dau 2	Lobby	82m ²	2.8m	11m	7.5m	40	80	40	50	25	30
Al Dau 3	Lobby	82m ²	2.8m	11m	7.5m	40	80	40	50	25	30
Al Dau 4	Lobby	82m ²	2.8m	11m	7.5m	40	80	40	50	25	30
Al Dau 5	Lobby	75m ²	2.8m	12.5m	6m	-	-	-	-	-	24
Al Dau 6	Lobby	18m ²	2.8m	5.2m	3.5m	-	-	-	-	-	8
Al Dau 7	Lobby	18m ²	2.8m	5.2m	3.5m	-	-	-	-	-	8
Al Dau VIP Lounge	Lobby	70m ²	6.5m	-	-	-	-	-	-	-	-
Al Dau Entrance Foyer	Lobby	130m ²	6.5m	26.5m	5m	-	-	-	-	-	-
Al Dau Terrace 1	Lobby	130m ²	-	27m	3.5m	-	-	-	-	-	-
Al Dau Foyer	Lobby	340m ²	2.8m	17m	20m	-	-	-	-	-	-
Al Dau View Room	Upper	250m ²	3.6m	25m	10m	140	250	120	100	40	40
Aqua 1	5 th Floor	138m ²	2.5m	16m	8.6m	60	100	60	70	40	50
Aqua 2	5 th Floor	115m ²	2.5m	16m	7.2m	50	80	50	50	30	50
Aqua Terrace	5 th Floor	170m ²	-	-	-	-	-	-	-	-	-
Aqua Foyer	5 th Floor	175.5m ²	2.5m	27m	6.5m	-	-	-	-	-	-